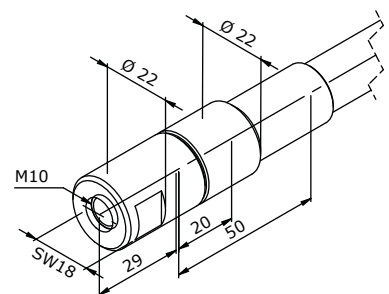
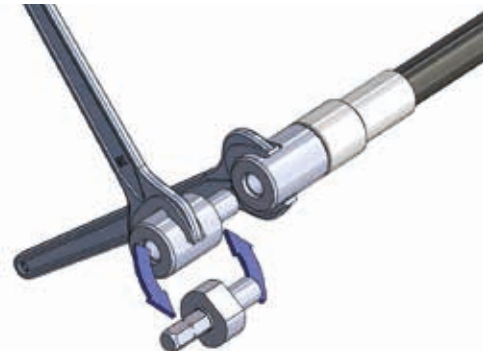


Größe / Size 1

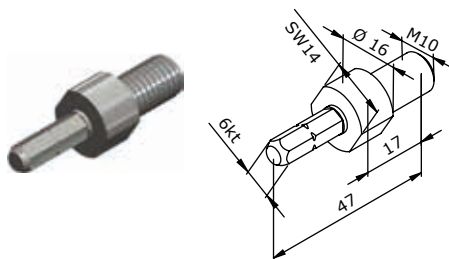


Größe / Size 2

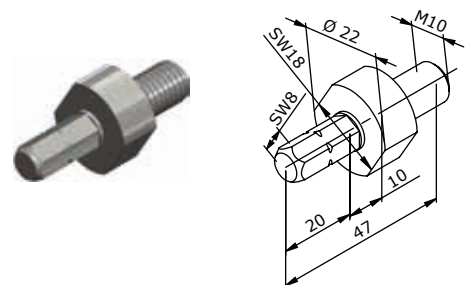
Passende Kupplungen in Folge für LUS und andere Biegsame Wellen

Suitable couplings below for LUS and other flexible shafts

Kupplung Sechskant Coupling hexagon

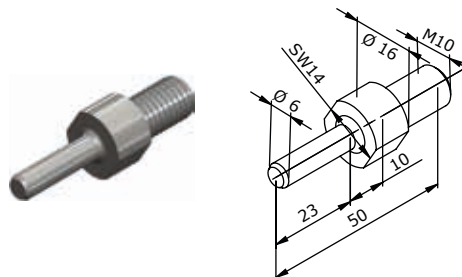


Größe Size	Art. Nr. Article no.	Sechskant hexagon
1	AR-1002186	6 mm
1	AR-1004427	Bit ISO 1173 E6,3

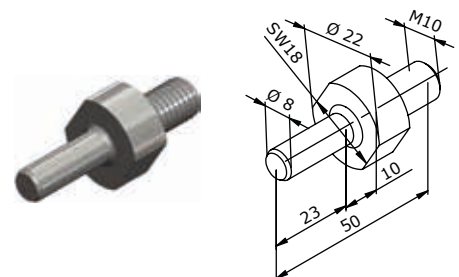


Größe Size	Art. Nr. Article no.	Sechskant hexagon
2	AR-1002187	8 mm

Kupplung Zapfen Coupling pin



Größe Size	Art. Nr. Article no.	Zapfen pin
1	AR-1002188	6 mm



Größe Size	Art. Nr. Article no.	Zapfen pin
2	AR-1002189	8 mm

Kupplung Gewinde außen

Mit Ø16mm und M10 für beide Größen einsetzbar.

Coupling thread outside

With Ø16mm and M10 can be used for both sizes.



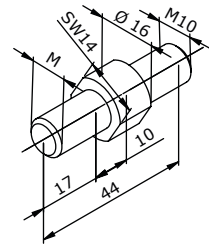
M6



M8



M10



Größe Size	Art. Nr. Article no.	Gewinde thread
1 + 2	AR-1002190	M6
1 + 2	AR-1002192	M8
1 + 2	AR-1002194	M10

Kupplung für Bürstenaufnahme, Gewinde innen metrisch

Mit Ø16mm und M10 für beide Größen einsetzbar.

Coupling for brush connection, thread inside metric

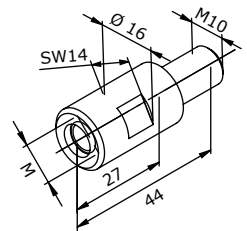
With Ø16mm and M10 can be used for both sizes.



M6



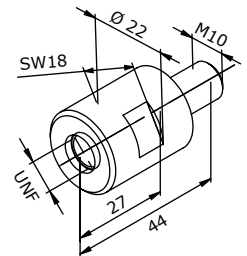
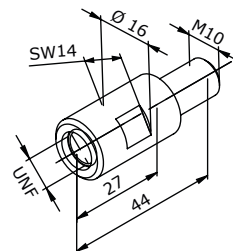
M8



Größe Size	Art. Nr. Article no.	Gewinde thread
1 + 2	AR-1002196	M6
1 + 2	AR-1002198	M8

Kupplung für Bürstenaufnahme, Gewinde innen zöllig

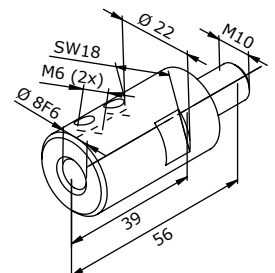
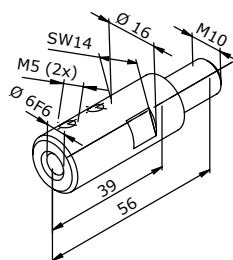
Coupling for brush connection, thread inside inch



Größe Size	Art. Nr. Article no.	Gewinde thread	Größe Size	Art. Nr. Article no.	Gewinde thread
1	AR-1002200	¼ Zoll	2	AR-1002203	⅜ Zoll
1	AR-1002202	⅝ Zoll	2	AR-1002207	½ Zoll

Kupplung mit Innenbohrung

Coupling with bore hole inside



Größe Size	Art. Nr. Article no.	Bohrung drilling	Größe Size	Art. Nr. Article no.	Bohrung drilling
1	AR-1002218	6mm	2	AR-1002219	8mm